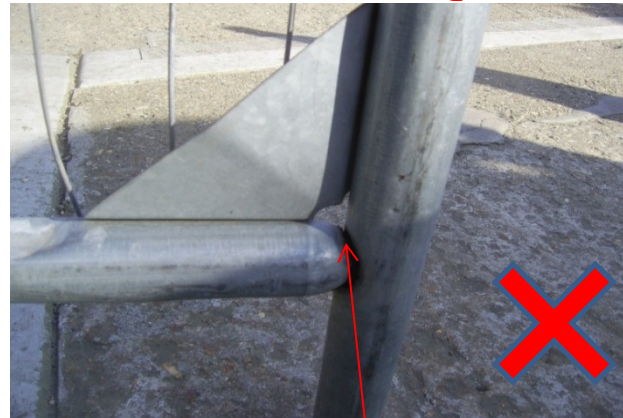


# What Would Good Have Looked Like 35 DAMAGED FENCE PANELS

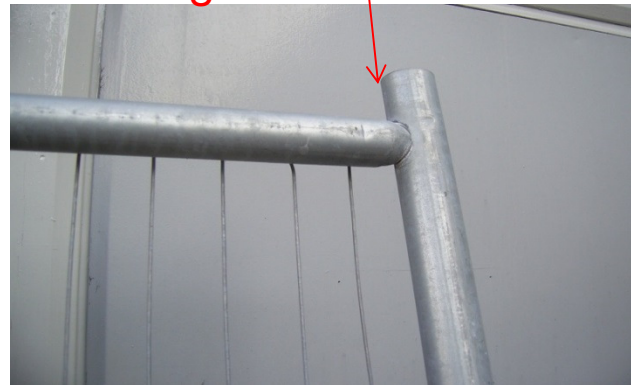
ExxonMobil

## What Happened?

During recent high winds a Haras type fence panel that was part of the main perimeter fence line was damaged, the weld in the top corner broke causing the panel to become unstable and not fit for purpose, the weld damage was not apparent



Damaged weld



### What's the Worst Thing That Could Happen?

The panel could have fallen over injuring an operative.

There could have been a security breach.



## What can we do different ?

- ✓ Inspect all fencing daily, including welds & fixings.
- ✓ Can we use an alternative fence type with rounded corners to reduce the weak points?
- ✓ Check the weather conditions and ensure the fencing is secure.
- ✓ Remove debris netting and signage to reduce the risk of being blown over by strong winds.
- ✓ Carry out your SPSA before leaving site.

Assess

Analyze

Act

Environmental Services

April 2014